



BIHAR

Fact Sheet

Immunization Cold
Chain and Vaccine
Logistics Network



1 State Vaccine Store

9 Regional Vaccine Stores



38 District Vaccine Stores

606 Cold Chain Points

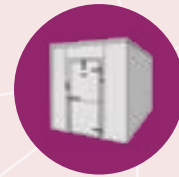


1,05,970
Session Sites

The cold chain system in Bihar consists of 1,946 working cold chain equipment.



3
Walk-in Freezers



17
Walk-in Coolers



1,039
Ice-Lined Refrigerators



887
Deep Freezers

Sources of data:

- Live data from Electronic Vaccine Intelligence Network (eVIN), as accessed in July 2017.
- eVIN Preparatory Assessment Study, conducted by UNDP in year 2016, with updates provided by the state in 2017.

BIHAR

The Universal Immunization Programme in Bihar aims to immunize a target population of **30.8** lakh children and **32.6** lakh pregnant women, every year.



The human resource network to manage vaccine logistics in Bihar consists of 48 vaccine store keepers and 606 cold chain handlers, to manage the vaccine logistics. They work under the guidance of the State Immunization Officer, District Immunization Officers and Medical Officers in-Charge.

The Electronic Vaccine Intelligence Network (eVIN) has been implemented across all the vaccine stores and cold chain points of Bihar. eVIN has facilitated capacity-building of all vaccine store keepers and cold chain handlers in the state through 45 batches of training programmes on eVIN, during the last two quarters of 2016. eVIN equipped them with standardised stock registers and smartphones to digitise the vaccine stocks. The entire vaccine logistics data in Bihar is now digitised and real-time data is available for informed decision-making.

A

Vaccine Supply Network

The state vaccine store located at Patna, caters to the entire vaccine supply in the state through the regional vaccine stores and district vaccine stores. These DVSs supply vaccines to the cold chain points located at the sub-district level. The CCPs further provide vaccines to the session sites.

Dry Stocks

The supply of dry stock in Bihar follows a separate route from the vaccines until it reaches the district vaccine stores. The state dry stock store is supplied with auto-disabled syringes of 0.1ml, and 0.5ml and disposable reconstitution syringes of 5ml, by the manufacturers. The state dry stock store supplies these syringes to all DVSs.

Cold Chain Points

- Bihar has an average number of 16 CCPs per district. However, there is a wide variation, ranging from 6 CCPs in Arwal to 37 CCPs in Patna.
- 46 per cent of CCPs cater to a population of more than 2 lakhs. 43 per cent of CCPs cater to a population of 1-2 lakhs and only 11 per cent of CCPs cater to a population of less than 1 lakh.

Session Sites

- On an average, a district in Bihar has 2,786 session sites; varying from 748 session sites in Sheikhpura to 5,286 sites in Patna.
- On an average, one CCP caters to 176 session sites; ranging from 66 session sites catered by Piprashi PHC West Champaran to 470 session sites catered by PHC Harnatarh in district West Champaran. There are many other CCPs in Bihar which cater to 400 or more session sites, namely Sadar PHC Biharsarif (470), PHC Araria Sadar (464), Referral Hospital Raniganj (446), SDH Forbesganj (436), PHC Manjholia (435), PHC Barsoi (424), PHC Narkatiyaganj (421), Referral hospital Pirpainti (417), PHC Surajgarha (417), PHC Hajipur (407) and PHC Kochadhaman (400).
- Majority of the session sites (more than 70 per cent) in Bihar are within the range of 30 km from respective CCPs. However, a couple of CCPs have very distant session sites, such as PHC Chainpur (75), PHC Chakai (70), PHC Ramnagar (60), PHC Motihari (50) and PHC Padarak (50).

B

Vaccine Delivery Mechanism

- Around 95 per cent of vaccine delivery from CCPs to session sites is done by alternate vaccine delivery (courier) and the remaining 5 per cent is delivered through other sources.
- Functional vaccine vans are available at all 38 DVSs.
- Three functional vaccine vans do not have drivers associated with them.
- Over 80 per cent DVSs follow pull mechanism of vaccine distribution, based on requisition raised by CCPs. The remaining DVSs supply vaccines as per availability.
- Vaccine supplies from DVS to CCP is on monthly basis, subject to the availability of stocks.

C

Cold Chain Equipment

The immunization cold chain network of Bihar runs on 1,946 working cold chain equipment installed across 654 vaccine stores and cold chain points. These include 3 walk-in freezers, 17 walk-in coolers, 1,039 ice-lined refrigerators and 887 deep freezers.

Table 1: Working Cold Chain Equipment in Bihar

Type of Store	Type of Equipment			
	WIF	WIC	ILR	DF
Total	1,946			
	3	17	1,039	887
SVS	1	4	-	-
RVS	2	13	1	3
DVS	-	-	165	107
CCP	-	-	874	780

Moreover, there are 51 cold chain equipment on stand-by and 134 cold chain equipment under repair. The state does not have any solar equipment.

Additionally, around 600 ILRs and 140 DFs are under the process of procurement by the Government of India for strengthening the cold chain infrastructure in Bihar.

Non-electrical cold chain equipment

The state has 4,440 functional large cold boxes and 16,608 functional small cold boxes. Around 75 per cent of these cold boxes are currently in use for the transportation of vaccines from stores to CCPs and CCPs to beneficiaries.

Stabiliser

- Nearly all the functional DFs are attached with a functional stabiliser and 85 per cent of these are dedicated stabilisers.
- Around 87 per cent of the functional ILRs are attached with a functional stabiliser and 75 per cent of these stabilisers are dedicated to the ILR.

Thermometer

Over 91 per cent of DFs and ILRs have a functional thermometer kept inside them.

D

Human Resource

- The state has 48 vaccine store keepers and 606 cold chain handlers. The position of cold chain handlers is not vacant at any of the cold chain points.
- There is no dedicated position of cold chain handler in the state and it is an assigned responsibility. In Bihar, around 70 per cent CCHs are either ANMs, MPWs, LHVs or health supervisors.
- Nearly 23 per cent of the CCHs are qualified upto 10th standard, 47 per cent of the CCHs are qualified upto 12th standard and the remaining 30 per cent of the CCHs are graduates or have pursued higher education.
- All the CCHs have received the training for cold chain handler within the last three years.
- All the CCHs have received the eVIN training.
- Cold chain handlers are provided supportive supervision on a regular basis.

Figure 1: Immunization Cold Chain Network in Bihar

State Vaccine Stores		Patna SVS									
9 Regional Vaccine Stores		9 Regional Vaccine Stores									
38 District Vaccine Stores		38 District Vaccine Stores									
606 Cold Chain Points		606 Cold Chain Points									
1,05,970 Session Sites		1,05,970 Session Sites									
Regional Vaccine Stores		Aurangabad RVS	Bhagalpur RVS	Champanan East RVS	Darbhanga RVS	Patna	Nalanda RVS	Muzaffarpur RVS	Purnia RVS	Saran RVS	Saharsa RVS
13,425 DVSS		5 DVSS	5 DVSS	2 DVSS	3 DVSS	5 DVSS	4 DVSS	4 DVSS	4 DVSS	3 DVSS	3 DVSS
77 CCPs		58 CCPs	49 CCPs	63 CCPs	90 CCPs	90 CCPs	51 CCPs	59 CCPs	62 CCPs	57 CCPs	40 CCPs
11,331 SSSs		10,805 SSSs	9,185 SSSs	11,520 SSSs	15,190 SSSs	15,190 SSSs	8,002 SSSs	11,186 SSSs	11,331 SSSs	9,757 SSSs	5,569 SSSs
District Vaccine Stores		Arwal DVS	Banka DVS	Champanan East DVS	Dharbanga DVS	Begusarai DVS	Jehanabad DVS	Muzaffarpur DVS	Araria DVS	Gopalganj DVS	Madhepura DVS
766 SSSs		6 CCPs	12 CCPs	28 CCPs	20 CCPs	19 CCPs	8 CCPs	18 CCPs	10 CCPs	16 CCPs	16 CCPs
766 SSSs		766 SSSs	2,358 SSSs	4,942 SSSs	3,370 SSSs	3,123 SSSs	1,387 SSSs	4,034 SSSs	2,744 SSSs	2,497 SSSs	1,899 SSSs
District Vaccine Stores		Aurangabad DVS	Bhagalpur DVS	Champanan West DVS	Madhubani DVS	Bhojpur DVS	Nalanda DVS	Sheohar DVS	Katihar DVS	Saran DVS	Saharsa DVS
2,730 SSSs		12 CCPs	17 CCPs	21 CCPs	22 CCPs	16 CCPs	21 CCPs	6 CCPs	23 CCPs	21 CCPs	11 CCPs
2,730 SSSs		2,730 SSSs	3,178 SSSs	4,243 SSSs	4,107 SSSs	2,996 SSSs	3,707 SSSs	813 SSSs	3,346 SSSs	3,853 SSSs	1,834 SSSs
District Vaccine Stores		Gaya DVS	Jamui DVS	Samastipur DVS	Buxar DVS	Nawada DVS	Sitamarahi DVS	Kishanganj DVS	Siwan DVS	Supaul DVS	
5,089 SSSs		27 CCPs	11 CCPs	21 CCPs	11 CCPs	15 CCPs	18 CCPs	10 CCPs	20 CCPs	13 CCPs	
5,089 SSSs		5,089 SSSs	2,206 SSSs	4,043 SSSs	2,059 SSSs	2,160 SSSs	3020 SSSs	2,280 SSSs	3,407 SSSs	1,836 SSSs	
District Vaccine Stores		Kaimur DVS	Lakhisarai DVS	Khagaria DVS	Patna DVS	Sheikhpura DVS	Vaishali DVS	Purnia DVS			
2,045 SSSs		13 CCPs	8 CCPs	7 CCPs	37 CCPs	7 CCPs	17 CCPs	19 CCPs			
2,045 SSSs		2,045 SSSs	1,477 SSSs	1,726 SSSs	5,286 SSSs	748 SSSs	3,319 SSSs	2,961 SSSs			
District Vaccine Stores		Rohtas DVS	Munger DVS								
2,795 SSSs		19 CCPs	10 CCPs								
2,795 SSSs		2,795 SSSs	1,586 SSSs								



Figure 2: Map of Immunization Cold Chain Network in Bihar

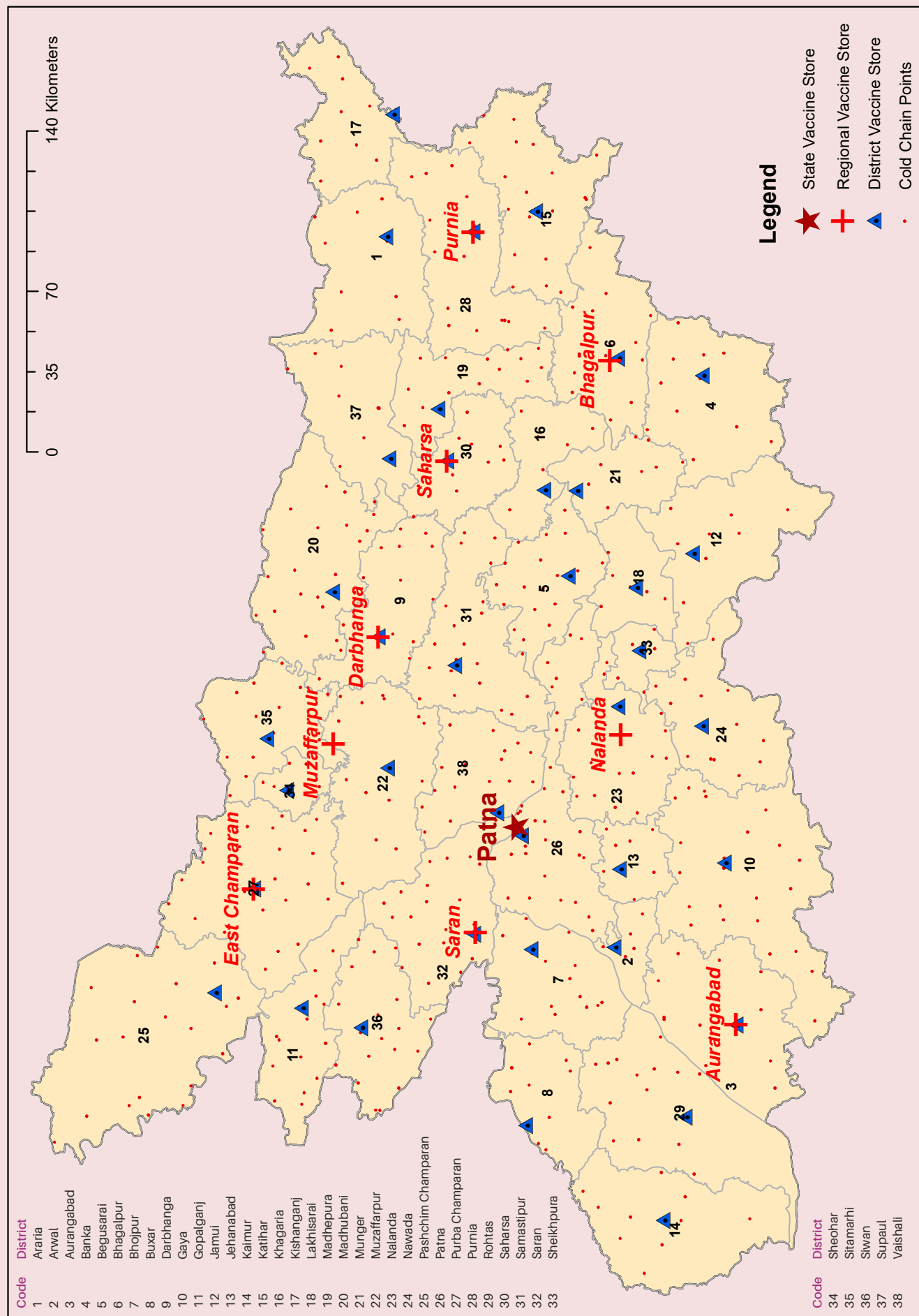


Table 2: District-Wise Availability of Cold Chain Equipment in Bihar

District	Working Cold Chain Equipment													Total	CCE on Stand-By	CCE Under Repair
	SVS			RVS			DVS			CCP						
	WIF	WIC	WIF	WIC	WIF	WIC	ILR	DF	ILR	DF	ILR	DF				
Total	1	5	2	15	13	165	107	874	780	1,946	51	134				
Araria						4		25	16	45	2	3				
Anwal						3	3	14	16	36	6	3				
Aurangabad			1	2		8	5	21	17	54		4				
Banka						2	2	16	16	36		5				
Begusarai						6	8	25	25	64		8				
Bhagalpur				2		4	3	30	21	60		9				
Bhojpur						5	3	18	20	46		8				
Buxar						3	1	17	16	37	5	2				
Champanan East				1		2	3	34	29	69	3	10				
Champanan West					1	6	2	38	22	68		2				
Dharbanga						3	2	23	22	49	3	2				
Gaya						3	2	32	47	84		5				
Gopalganj						4	2	20	15	41		7				
Jamui						5	3	18	14	40		10				
Jehanabad						3	2	14	11	30						
Kaimur						5	3	15	20	43	1	7				
Katihar						6	3	34	24	67	1	1				
Khagaria						5	3	10	8	26	11	5				
Kishanganj						5	2	17	12	36	5					
Lakhisarai						4	2	13	17	36		1				
Madhepura						1	3	19	14	37	4	8				
Madhubani						8	3	28	24	63		3				
Munger						3	2	19	11	35		2				
Muzaffarpur				1		1	5	32	31	70		0				
Nalanda				1		3	4	30	24	62						
Nawada						6	4	17	20	47						
Patna	1	4				8	3	53	35	104	1	15				
Purnia			1	2		3	3	34	19	62	1					
Rohtas						3	3	29	21	56	2	6				
Saharsa					1	5	2	20	23	51	6					
Samastipur						6	6	24	28	64		2				
Saran				2		4	1	30	24	61		2				
Sheikhpura						4	3	16	10	33						
Sheohar						4	1	10	7	22		1				
Sitamarahi						3	1	19	38	61						
Siwan						6	2	21	20	49		2				
Supaul						5	2	14	13	34		1				
Vaishali						9	4	25	30	68						



Table 3: List of Vaccine Storage Points in Bihar

Sr. No.	District	Name of Vaccine Storage Point
1	Patna	Patna SVS
2	Aurangabad	Aurangabad RVS
3	Bhagalpur	Bhagalpur RVS
4	Darbhanga	Darbhanga RVS
5	East Champaran	East Champaran RVS
6	Muzaffarpur	Muzaffarpur RVS
7	Nalanda	Nalanda RVS
8	Purnia	Purnia RVS
9	Saharsa	Saharsa RVS
10	Saran	Saran RVS
11	Araria	Araria DVS
12	Arwal	Arwal DVS
13	Aurangabad	Aurangabad DVS
14	Banka	Banka DVS
15	Begusarai	Begusarai DVS
16	Bhagalpur	Bhagalpur DVS
17	Bhojpur	Bhojpur DVS
18	Buxar	Buxar DVS
19	Darbhanga	Darbhanga DVS
20	East Champaran	East Champaran DVS
21	Gaya	Gaya DVS
22	Gopalganj	Gopalganj DVS
23	Jamui	Jamui DVS
24	Jehanabad	Jehanabad DVS
25	Kaimur	Kaimur DVS
26	Katihar	Katihar DVS
27	Khagaria	Khagaria DVS
28	Kishanganj	Kishanganj DVS
29	Lakhisarai	Lakhisarai DVS
30	Madhepura	Madhepura DVS
31	Madhubani	Madhubani DVS
32	Munger	Munger DVS
33	Muzaffarpur	Muzaffarpur DVS
34	Nalanda	Nalanda DVS
35	Nawada	Nawada DVS
36	Patna	Patna DVS
37	Purnia	Purnia DVS
38	Rohtas	Rohtas DVS
39	Saharsa	Saharsa DVS
40	Samastipur	Samastipur DVS
41	Saran	Saran DVS
42	Sheikhpura	Sheikhpura DVS
43	Sheohar	Sheohar DVS
44	Sitamarhi	Sitamarhi DVS

Sr. No.	District	Name of Vaccine Storage Point
45	Siwan	Siwan DVS
46	Supaul	Supaul DVS
47	Vaishali	Vaishali DVS
48	West Champaran	West Champaran DVS
49	Araria	Araria Sadar Hospital DH
50	Araria	Araria Sadar PHC
51	Araria	Bhargama PHC
52	Araria	Forbesganj SDH
53	Araria	Jokihat Referral Hospital
54	Araria	Kursakata PHC
55	Araria	Nartpatganj PHC
56	Araria	Palasi PHC
57	Araria	Raniganj Referral Hospital
58	Araria	Sikti PHC
59	Arwal	Arwal PHC
60	Arwal	Arwal Sadar Hospital DH
61	Arwal	Kaler PHC
62	Arwal	Karpi PHC
63	Arwal	Kurtha PHC
64	Arwal	Sonbhadra Bansi Suryapur PHC
65	Aurangabad	Barun PHC
66	Aurangabad	Daudnagar PHC
67	Aurangabad	Deo PHC
68	Aurangabad	Goh PHC
69	Aurangabad	Haspura PHC
70	Aurangabad	Aurangabad PHC
71	Aurangabad	Kutumba PHC
72	Aurangabad	Madanpur PHC
73	Aurangabad	Nabinagar PHC
74	Aurangabad	Naughrah APHC
75	Aurangabad	Obra PHC
76	Aurangabad	Rafiganj PHC
77	Banka	Amarpur PHC
78	Banka	Banka DH
79	Banka	Banka Sadar PHC
80	Banka	Barahat PHC
81	Banka	Baunsi PHC
82	Banka	Belhar PHC
83	Banka	Chandan PHC
84	Banka	Dhoraiya PHC
85	Banka	Fullidumar PHC
86	Banka	Katoriya RH

Sr. No.	District	Name of Vaccine Storage Point
87	Banka	Rajoun PHC
88	Banka	Shambhuganj PHC
89	Begusarai	Bachwara PHC
90	Begusarai	Bakhari PHC
91	Begusarai	Baliya PHC
92	Begusarai	Barauni PHC
93	Begusarai	Begusarai Sadar PHC
94	Begusarai	Begusarai Urban UHC
95	Begusarai	Bhagwanpur PHC
96	Begusarai	Birpur PHC
97	Begusarai	Cheriyi Bariyarpur PHC
98	Begusarai	Chhurahi PHC
99	Begusarai	Dandari PHC
100	Begusarai	Garhpura PHC
101	Begusarai	Khodawandpur PHC
102	Begusarai	Mansoorchak PHC
103	Begusarai	Matihani PHC
104	Begusarai	Nawkothe PHC
105	Begusarai	Sahebpur Kamal PHC
106	Begusarai	Shamho PHC
107	Begusarai	Teghra PHC
108	Bhagalpur	Bihpur PHC
109	Bhagalpur	Gopalpur PHC
110	Bhagalpur	Goradih PHC
111	Bhagalpur	Jagdishpur PHC
112	Bhagalpur	Kahalgaon PHC
113	Bhagalpur	Kharik PHC
114	Bhagalpur	Nathnagar PHC
115	Bhagalpur	Jawahar Lal Nehru Medical College Hospital
116	Bhagalpur	Narayanpur PHC
117	Bhagalpur	Naugachiya PHC
118	Bhagalpur	Pirpanti PHC
119	Bhagalpur	Rangra PHC
120	Bhagalpur	Sabour PHC
121	Bhagalpur	Sahkund PHC
122	Bhagalpur	Sanahulla PHC
123	Bhagalpur	Sultanganj PHC
124	Bhagalpur	Urban PHC
125	Bhojpur	Agiaon PHC
126	Bhojpur	Barhara PHC
127	Bhojpur	Sadar PHC
128	Bhojpur	Bihiya PHC
129	Bhojpur	Charpokhri PHC
130	Bhojpur	Garahani PHC
131	Bhojpur	Jagdishpur PHC
132	Bhojpur	Jagdishpur SDH
133	Bhojpur	Koilwar PHC

Sr. No.	District	Name of Vaccine Storage Point
134	Bhojpur	Ara Urban
135	Bhojpur	Piro PHC
136	Bhojpur	Sahar PHC
137	Bhojpur	Shahpur PHC
138	Bhojpur	Sandesh PHC
139	Bhojpur	Tarari PHC
140	Bhojpur	Udwantnagar PHC
141	Buxar	Buxar Sadar
142	Buxar	Chakki PHC
143	Buxar	Chougain PHC
144	Buxar	Chousa PHC
145	Buxar	Dumraon PHC
146	Buxar	Itarhi PHC
147	Buxar	Kesath PHC
148	Buxar	Nawanagar PHC
149	Buxar	Brahampur PHC
150	Buxar	Rajpur PHC
151	Buxar	Simari PHC
152	Darbhanga	Alinagar PHC
153	Darbhanga	Bahadurpur PHC
154	Darbhanga	Baheri PHC
155	Darbhanga	Benipur PHC
156	Darbhanga	Benipur SDH
157	Darbhanga	Biraul CHC
158	Darbhanga	Darbhanga Sadar PHC
159	Darbhanga	Gouraboraam PHC
160	Darbhanga	Ghanshyampur PHC
161	Darbhanga	Hanuman Nagar PHC
162	Darbhanga	Hayaghat PHC
163	Darbhanga	Jalley PHC
164	Darbhanga	Keoti PHC
165	Darbhanga	Kiratpur PHC
166	Darbhanga	Kusheshwar Asthan PHC
167	Darbhanga	Kusheshwar Asthan (East) PHC
168	Darbhanga	Darbhanga URBAN
169	Darbhanga	Manigachhi PHC
170	Darbhanga	Singwara PHC
171	Darbhanga	Tardih PHC
172	East Champaran	Adapur PHC
173	East Champaran	Areraj PHC
174	East Champaran	Banjaria PHC
175	East Champaran	Bankatwa PHC
176	East Champaran	Chakia PHC
177	East Champaran	Chhauradano PHC
178	East Champaran	Chiraiya PHC
179	East Champaran	Dhaka PHC
180	East Champaran	Ghorasahan PHC

Sr. No.	District	Name of Vaccine Storage Point
181	East Champaran	Harsidhi PHC
182	East Champaran	Kalyanpur PHC
183	East Champaran	Kesariya PHC
184	East Champaran	Kotwa PHC
185	East Champaran	Madhuban PHC
186	East Champaran	Mehasi PHC
187	East Champaran	Motihari PHC
188	East Champaran	Motihari Urban
189	East Champaran	Pahadpur PHC
190	East Champaran	Pakadidayal PHC
191	East Champaran	Patahi PHC
192	East Champaran	Phenhara PHC
193	East Champaran	Piprakothi PHC
194	East Champaran	Ramgarhwa PHC
195	East Champaran	Raxaul PHC
196	East Champaran	Sangrampur PHC
197	East Champaran	Sugauli PHC
198	East Champaran	Tetriya PHC
199	East Champaran	Turkoliya PHC
200	Gaya	A. N. Magadh Medical College Hospital
201	Gaya	Amas PHC
202	Gaya	Atri PHC
203	Gaya	Bankey Bazar PHC
204	Gaya	Barachatti PHC
205	Gaya	Belaganj PHC
206	Gaya	Bodh Gaya PHC
207	Gaya	Dhobhi PHC
208	Gaya	Dumariya PHC
209	Gaya	Fatehpur PHC
210	Gaya	Guraru PHC
211	Gaya	Gurua PHC
212	Gaya	Imamganj PHC
213	Gaya	Jay Prakash Narayana Hospital
214	Gaya	Khezarsaari PHC
215	Gaya	Konch PHC
216	Gaya	Manpur PHC
217	Gaya	Mohanpur PHC
218	Gaya	Mohra PHC
219	Gaya	Nagar Prakhand PHC
220	Gaya	Nimchak Bathanhi PHC
221	Gaya	Paraiya PHC
222	Gaya	Prabhavati Lady Hospital
223	Gaya	Sherghati PHC
224	Gaya	Tankuppa PHC
225	Gaya	Tekari PHC
226	Gaya	Wazirganj PHC
227	Gopalganj	Baikunthpur CHC

Sr. No.	District	Name of Vaccine Storage Point
228	Gopalganj	BARAULI PHC
229	Gopalganj	BHORE PHC
230	Gopalganj	Bijayipur PHC
231	Gopalganj	Gopalganj DH
232	Gopalganj	Gopalganj Sadar PHC
233	Gopalganj	Hathuwa PHC
234	Gopalganj	Hathuwa SDH
235	Gopalganj	Kateya PHC
236	Gopalganj	Kuchaikote CHC
237	Gopalganj	Manjha CHC
238	Gopalganj	Panchadeori PHC
239	Gopalganj	Phulwariya PHC
240	Gopalganj	SIDHWALIYA PHC
241	Gopalganj	THAWE PHC
242	Gopalganj	Uchakagaon CHC
243	Jamui	Aliganj PHC
244	Jamui	Barhat PHC
245	Jamui	Chakai PHC
246	Jamui	Gidhour PHC
247	Jamui	Jamui Sadar Hospital DH
248	Jamui	Jamui Urban PHC
249	Jamui	Jhajha PHC
250	Jamui	Khaira PHC
251	Jamui	Laxmipur PHC
252	Jamui	Sikandra PHC
253	Jamui	Sono PHC
254	Jehanabad	Ghoshi PHC
255	Jehanabad	Hulashganj PHC
256	Jehanabad	Jehanabad Sadar Hospital
257	Jehanabad	Kako PHC
258	Jehanabad	Makhdumpur PHC
259	Jehanabad	Okari PHC
260	Jehanabad	Ratni Faridpur PHC
261	Jehanabad	Sikariyan PHC
262	Kaimur	Adhaura PHC
263	Kaimur	Bhabua Urban
264	Kaimur	Bhagwanpur PHC
265	Kaimur	Chainpur PHC
266	Kaimur	Chand PHC
267	Kaimur	Durgawati PHC
268	Kaimur	Bhabua PHC
269	Kaimur	Kaimur DH
270	Kaimur	Kudra PHC
271	Kaimur	Mohaniya PHC
272	Kaimur	Nuaon PHC
273	Kaimur	Ramgarh PHC
274	Kaimur	Rampur PHC

Sr. No.	District	Name of Vaccine Storage Point
275	Katihar	Amdabad PHC
276	Katihar	Azamnagar PHC
277	Katihar	Balrampur APHC
278	Katihar	Barari PHC
279	Katihar	Barsoi PHC
280	Katihar	Beliya Belon PHC
281	Katihar	Dhandkhora PHC
282	Katihar	Falka PHC
283	Katihar	Hasanganj PHC
284	Katihar	Kadawa PHC
285	Katihar	Katihar Medical College
286	Katihar	Katihar Railway Hospital
287	Katihar	Katihar Sadar Hospital DH
288	Katihar	Katihar PHC
289	Katihar	Korha PHC
290	Katihar	Kursela PHC
291	Katihar	Manihari PHC
292	Katihar	Manihari Ref Hospital
293	Katihar	Mansahi PHC
294	Katihar	Pranpur PHC
295	Katihar	Sameli PHC
296	Katihar	Shalmari APHC
297	Katihar	Balrampur PHC
298	Khagaria	Alauli PHC
299	Khagaria	Beldaur PHC
300	Khagaria	Gogari CHC
301	Khagaria	Khagaria PHC
302	Khagaria	Chautham PHC
303	Khagaria	Prawatta PHC
304	Khagaria	Mansi PHC
305	Kishanganj	Bahadurganj PHC
306	Kishanganj	Chatargachh Ref Hospital
307	Kishanganj	Dighalbank PHC
308	Kishanganj	Kishanganj DH
309	Kishanganj	MGM Medical College & Hospital Kishanganj
310	Kishanganj	Kishanganj Belva PHC
311	Kishanganj	Kochadaman PHC
312	Kishanganj	Pothiya PHC
313	Kishanganj	Terhagchh PHC
314	Kishanganj	Thakurganj PHC
315	Lakhisarai	Barahiya PHC
316	Lakhisarai	Ghosaith APHC
317	Lakhisarai	Halsi PHC
318	Lakhisarai	Lakhisarai PHC
319	Lakhisarai	Lakhisarai Sadar Hospital DH

Sr. No.	District	Name of Vaccine Storage Point
320	Lakhisarai	Pipairya PHC
321	Lakhisarai	Ramgarh PHC
322	Lakhisarai	Surajgraha PHC
323	Madhepura	Alamnagar PHC
324	Madhepura	Bihariganj PHC
325	Madhepura	Chausa PHC
326	Madhepura	Gamhariya PHC
327	Madhepura	Ghailadh PHC
328	Madhepura	Gwalpara PHC
329	Madhepura	Kumarkhand PHC
330	Madhepura	Madhepura Sadar Hospital
331	Madhepura	Majhora APHC
332	Madhepura	Murho PHC
333	Madhepura	Murliganj PHC
334	Madhepura	Phulot APHC
335	Madhepura	Puraini PHC
336	Madhepura	Sankarpur PHC
337	Madhepura	Singheshar PHC
338	Madhepura	Udakisananganj PHC
339	Madhubani	Andhrathari RH
340	Madhubani	Babubarhi PHC
341	Madhubani	Basopatti PHC
342	Madhubani	Benipatti PHC
343	Madhubani	Bisfi PHC
344	Madhubani	Ghoghardiha PHC
345	Madhubani	Harlaksi PHC
346	Madhubani	Jainagar PHC
347	Madhubani	Jhanjharpur PHC
348	Madhubani	Kaluahi PHC
349	Madhubani	Khajauli PHC
350	Madhubani	Khutauna PHC
351	Madhubani	Ladania PHC
352	Madhubani	Lakhnaur PHC
353	Madhubani	Laukahi PHC
354	Madhubani	Madhepur PHC
355	Madhubani	Madhubani Urban (MCH)
356	Madhubani	Madhwapur PHC
357	Madhubani	Pandaul RH
358	Madhubani	Phulparas RH
359	Madhubani	Rahika PHC
360	Madhubani	Rajnagar PHC
361	Munger	Asarganj PHC
362	Munger	Bariarpur PHC
363	Munger	Dharhara PHC
364	Munger	Jamalpur Rural PHC
365	Munger	Kharagpur PHC
366	Munger	Munger Urban

Sr. No.	District	Name of Vaccine Storage Point
367	Munger	Munger Sadar PHC
368	Munger	Sangrampur PHC
369	Munger	Tarapur PHC
370	Munger	Tetiya Bamber PHC
371	Muzaffarpur	Aurai PHC
372	Muzaffarpur	Bochaha PHC
373	Muzaffarpur	Gayghat PHC
374	Muzaffarpur	Kanti PHC
375	Muzaffarpur	Katra PHC
376	Muzaffarpur	Kudhani PHC
377	Muzaffarpur	Marwan PHC
378	Muzaffarpur	Minapur PHC
379	Muzaffarpur	Motipur PHC
380	Muzaffarpur	Muraul PHC
381	Muzaffarpur	Mushari PHC
382	Muzaffarpur	Sadar Hospital Muzaffarpur DH
383	Muzaffarpur	Sri Krishna Medical Collage and Hospital
384	Muzaffarpur	Urban Muzaffarpur
385	Muzaffarpur	Paroo PHC
386	Muzaffarpur	Sahebganj PHC
387	Muzaffarpur	Sakra PHC
388	Muzaffarpur	Saraiya PHC
389	Nalanda	Asthawan PHC
390	Nalanda	Ben PHC
391	Nalanda	Biharsharif urban PHC
392	Nalanda	Chandi PHC
393	Nalanda	Ekgangarsarai PHC
394	Nalanda	Giriyak PHC
395	Nalanda	Hilsa PHC
396	Nalanda	Islampur PHC
397	Nalanda	Karaiparsurai PHC
398	Nalanda	Katrisarai PHC
399	Nalanda	Bind PHC
400	Nalanda	Nagarnausa PHC
401	Nalanda	Harnaut PHC
402	Nalanda	Noorsarai PHC
403	Nalanda	Parwalpur PHC
404	Nalanda	Rahui PHC
405	Nalanda	Rajgir PHC
406	Nalanda	Biharsharif sadar PHC
407	Nalanda	Sarmera PHC
408	Nalanda	Silao PHC
409	Nalanda	Tharthari PHC
410	Nawada	Akbarpur PHC
411	Nawada	GovindPur PHC
412	Nawada	Hisua PHC
413	Nawada	Kasichak PHC

Sr. No.	District	Name of Vaccine Storage Point
414	Nawada	Kawakol PHC
415	Nawada	Meskour PHC
416	Nawada	Nardiganj PHC
417	Nawada	Narhat PHC
418	Nawada	Nawada Sadar Hospital DH
419	Nawada	Sadar Block PHC
420	Nawada	Pakribrawan PHC
421	Nawada	Rajauli PHC
422	Nawada	Roh PHC
423	Nawada	Sirdala PHC
424	Nawada	Warisaliganj PHC
425	Patna	Athmalgola PHC
426	Patna	Bakhtiyarpur PHC
427	Patna	Barh PHC
428	Patna	Belchi PHC
429	Patna	Bihta PHC
430	Patna	Bikram PHC
431	Patna	Danapur PHC
432	Patna	Daniyawan PHC
433	Patna	Dhanarua PHC
434	Patna	Dulhinbazar PHC
435	Patna	Fatuha PHC
436	Patna	Gardanibagh UHC
437	Patna	GGs Patna City UHC
438	Patna	Ghoswari PHC
439	Patna	Gulzarbagh Dispensary UHC
440	Patna	Jai Prabha UHC
441	Patna	Kankarbagh Dispensary UHC
442	Patna	Khushrupur PHC
443	Patna	Maner PHC
444	Patna	Marufganj Dispensary UHC
445	Patna	Masaurhi PHC
446	Patna	Mokama PHC
447	Patna	Naubatpur PHC
448	Patna	New Gardiner Road UHC
449	Patna	Paliganj PHC
450	Patna	Pandarak PHC
451	Patna	NMCH
452	Patna	PMCH
453	Patna	Patna Sadar PHC
454	Patna	Phulwarisharif PHC
455	Patna	Punpun PHC
456	Patna	Rajbanshi Nagar UHC
457	Patna	Rajendra Nagar UHC
458	Patna	Sampatchak PHC

Sr. No.	District	Name of Vaccine Storage Point
459	Patna	Barh SDH
460	Patna	Danapur SDH
461	Patna	Masaurhi SDH
462	Purnia	Amour Referral Hospital
463	Purnia	Baisa PHC
464	Purnia	Baisee PHC
465	Purnia	Banmankhi SDH
466	Purnia	Barhara Kothi PHC
467	Purnia	Bhawanipur PHC
468	Purnia	Dagarua PHC
469	Purnia	Dhamdaha Referral Hospital
470	Purnia	Jalalgarh PHC
471	Purnia	Jankinagar APHC
472	Purnia	Kasba PHC
473	Purnia	Krityanand Nagar PHC
474	Purnia	Mohanpur APHC
475	Purnia	Sadar Hospital DH
476	Purnia	Purnia East Rural PHC
477	Purnia	Purnia East Urban PHC
478	Purnia	Rupauli Referral Hospital
479	Purnia	Sarsi PHC
480	Purnia	Shrinagar PHC
481	Rohtas	Akori Gola PHC
482	Rohtas	Bikramganj PHC
483	Rohtas	Chenari PHC
484	Rohtas	Dawath PHC
485	Rohtas	Dehri PHC
486	Rohtas	Dinara PHC
487	Rohtas	Karakat PHC
488	Rohtas	Kargahar PHC
489	Rohtas	Kochas PHC
490	Rohtas	Nasriganj PHC
491	Rohtas	Nauhata PHC
492	Rohtas	Nokha PHC
493	Rohtas	Rajpur PHC
494	Rohtas	Rohtas PHC
495	Rohtas	Sanjhauli PHC
496	Rohtas	Sasaram PHC
497	Rohtas	Sheosagar PHC
498	Rohtas	Suryapura PHC
499	Rohtas	Tilouthu PHC
500	Saharsa	Banma Itahari PHC
501	Saharsa	Saharsa Sadar PHC
502	Saharsa	Mahishi PHC
503	Saharsa	Nauhata PHC
504	Saharsa	Panchgachhiya PHC
505	Saharsa	Patarghat PHC

Sr. No.	District	Name of Vaccine Storage Point
506	Saharsa	Saharsa Urban PHC
507	Saharsa	Salkhua PHC
508	Saharsa	Simari Bakhtiyarpur PHC
509	Saharsa	Sonbarsa PHC
510	Saharsa	Sourbazar PHC
511	Samastipur	Bibhutipur PHC
512	Samastipur	Bithan PHC
513	Samastipur	Dalsinghsarai PHC
514	Samastipur	Hasanpur PHC
515	Samastipur	Kalyanpur PHC
516	Samastipur	Khanpur PHC
517	Samastipur	Mohanpur PHC
518	Samastipur	Mohauddinagar PHC
519	Samastipur	Morwa PHC
520	Samastipur	Patori PHC
521	Samastipur	Pusa PHC
522	Samastipur	Rosera PHC
523	Samastipur	Samastipur PHC
524	Samastipur	Samastipur Urban
525	Samastipur	Sarairanjan PHC
526	Samastipur	Shivajinagar PHC
527	Samastipur	Singhia PHC
528	Samastipur	Tajpur PHC
529	Samastipur	Ujiarpur PHC
530	Samastipur	Vidyapatnagar PHC
531	Samastipur	Warishnagar PHC
532	Saran	Amnour CHC
533	Saran	Baniyapur Reeferl Hospital RH
534	Saran	Dariyapur PHC
535	Saran	Dighwara CHC
536	Saran	Ekma CHC
537	Saran	Garkha CHC
538	Saran	Isuwapur PHC
539	Saran	Jalalpur CHC
540	Saran	Lahladpur PHC
541	Saran	Maker PHC
542	Saran	Manjhi CHC
543	Saran	Marhaura PHC
544	Saran	Mashrakh CHC
545	Saran	Nagra PHC
546	Saran	Panapur PHC
547	Saran	Parsa CHC
548	Saran	Revilgang CHC
549	Saran	Sadar Block PHC
550	Saran	Sadar Hospital Saran DH
551	Saran	Sonpur CHC
552	Saran	Taraiya PHC

Sr. No.	District	Name of Vaccine Storage Point
553	Sheikhpura	Barbiga RH
554	Sheikhpura	Chewara PHC
555	Sheikhpura	Ghatkumbha PHC
556	Sheikhpura	Ariyari PHC
557	Sheikhpura	Sekhopursarai PHC
558	Sheikhpura	Seikhpura DH
559	Sheikhpura	Sheikhpura PHC
560	Sheohar	Dumri Katsari PHC
561	Sheohar	Sheohar Sadar PHC
562	Sheohar	Piprahi PHC
563	Sheohar	Purnahiya PHC
564	Sheohar	Sheohar DH
565	Sheohar	Tariyani PHC
566	Sitamarhi	Bairginiya PHC
567	Sitamarhi	Bangaon (bajpati) PHC
568	Sitamarhi	Bathnaha PHC
569	Sitamarhi	Belsand PHC
570	Sitamarhi	Bokhara PHC
571	Sitamarhi	Choraut PHC
572	Sitamarhi	Dumra PHC
573	Sitamarhi	Mejorganj PHC
574	Sitamarhi	Nanpur PHC
575	Sitamarhi	Parihar PHC
576	Sitamarhi	Parsauni PHC
577	Sitamarhi	Pupri PHC
578	Sitamarhi	Riga PHC
579	Sitamarhi	Runnisaidpur PHC
580	Sitamarhi	Sitamarhi DH
581	Sitamarhi	Sonbarsa PHC
582	Sitamarhi	Suppi PHC
583	Sitamarhi	Sursand PHC
584	Siwan	Andar PHC
585	Siwan	Barharya PHC
586	Siwan	Basantpur PHC
587	Siwan	Bhagwanpur PHC
588	Siwan	Darauli PHC
589	Siwan	Daraunda PHC
590	Siwan	Goriyakothi PHC
591	Siwan	Guthani PHC
592	Siwan	Hasanpur PHC
593	Siwan	Hussainganj PHC
594	Siwan	Jeeradei PHC
595	Siwan	Lakarinabiganj PHC
596	Siwan	Maharajganj PHC
597	Siwan	Mairwa PHC
598	Siwan	Nautan PHC
599	Siwan	Pachrukhi PHC
600	Siwan	Raghunathpur PHC

Sr. No.	District	Name of Vaccine Storage Point
601	Siwan	Siswan PHC
602	Siwan	Sadar Block PHC
603	Siwan	Siwan Sadar Hospital DH
604	Supaul	Balua Bazar APHC
605	Supaul	Basantpur PHC
606	Supaul	Chattapur PHC
607	Supaul	Kishanpur PHC
608	Supaul	Kunauli APHC
609	Supaul	Marauna PHC
610	Supaul	Nirmali PHC
611	Supaul	Pipra PHC
612	Supaul	Pratapganj PHC
613	Supaul	Raghopur PHC
614	Supaul	S. Bhaptiyahe PHC
615	Supaul	Sadar Block Supaul PHC
616	Supaul	Triveniganj PHC
617	Vaishali	Bhagwanpur PHC
618	Vaishali	Bidupur PHC
619	Vaishali	Chehra Kala PHC
620	Vaishali	Desri PHC
621	Vaishali	Goraul PHC
622	Vaishali	Hajipur DH
623	Vaishali	Hajipur PHC
624	Vaishali	Jandaha PHC
625	Vaishali	LALGANJ PHC
626	Vaishali	Mahnar PHC
627	Vaishali	Mahua PHC
628	Vaishali	Patepur PHC
629	Vaishali	Paterhi Belsar PHC
630	Vaishali	Raghopur (Mohanpur) Refral Hospital
631	Vaishali	Rajapakar PHC
632	Vaishali	Sahdai Buzurg PHC
633	Vaishali	Vaishali PHC
634	West Champaran	Bagaha-1 PHC
635	West Champaran	Bagaha-2 PHC
636	West Champaran	Bairiya PHC
637	West Champaran	Bakhari APHC
638	West Champaran	Balmiki Nagar APHC
639	West Champaran	Bettiah PHC
640	West Champaran	Bhitaha PHC
641	West Champaran	Chanpatia PHC
642	West Champaran	Madhubani PHC
643	West Champaran	Gaunaha PHC
644	West Champaran	Harnatarh PHC
645	West Champaran	Jogapatti PHC
646	West Champaran	Lauriya PHC
647	West Champaran	Mainatarh PHC
648	West Champaran	Majhauliya PHC

Sr. No.	District	Name of Vaccine Storage Point
649	West Champaran	Narkatiyaganj PHC
650	West Champaran	Nautan PHC
651	West Champaran	Piprashi PHC

Sr. No.	District	Name of Vaccine Storage Point
652	West Champaran	Ram Nagar PHC
653	West Champaran	Sikta PHC
654	West Champaran	Thakraha PHC

List of Abbreviations

ANM	Auxiliary Nurse and Midwife
APHC	Additional Primary Health Centre
AVD	Alternate Vaccine Delivery
CCE	Cold Chain Equipment
CCH	Cold Chain Handler
CCP	Cold Chain Point
CHC	Community Health Centre
DF	Deep Freezer
DH	District Hospital
DVS	District Vaccine Store
eVIN	Electronic Vaccine Intelligence Network
HSC	Health Sub-Centre
ILR	Ice-Lined Refrigerator

LHV	Lady Health Visitor
MCH	Medical College Hospital
MPW	Multi-Purpose Worker
PHC	Primary Health Centre
RVS	Regional Vaccine Store
SDH	Sub-District Hospital
SE	Solar Equipment
SS	Session Sites
SVS	State Vaccine Store
UHC	Urban Health Centre
UNDP	United Nations Development Programme
WIC	Walk-in Cooler
WIF	Walk-in Freezer



Bihar - Factsheet, Immunization Cold Chain and Vaccine Logistics Network, 2017.

Prepared and printed by the United Nations Development Programme for the Ministry of Health and Family Welfare, Government of India.



*Empowered lives.
Resilient nations.*