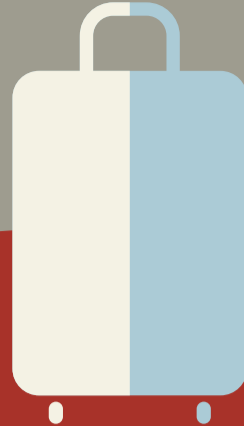


# EMIGRATION

A TWO-FACETED PHENOMENON



## THE BRIGHT SIDE:

### Falling monetary poverty

The absolute poverty rate



The absolute poverty rate fell from 30.2% in 2006 to 16.6% in 2012

The extreme poverty rate



The extreme poverty rate fell from 4.5% in 2006 to 0.6% in 2012

### Rise in consumption, especially of the basic products



### Development of the financial-banking sector and facilitation of investments



Share of bank credits in GDP



### Mitigation of pressure on labour market

Unemployed rate dropped



### The risk of maternal mortality

The mortality rate per 100.000 live births:



Women of reproductive age with poor financial situation and who work abroad in difficult conditions are exposed to higher maternal mortality risk.

## THE DARK SIDE:

### Depopulation of many rural localities



A young generation not adequately supervised by parents

HIV/AIDS incidence per 100.000 persons aged 15-24 years old



The abortion rate per 1000 women of reproductive age

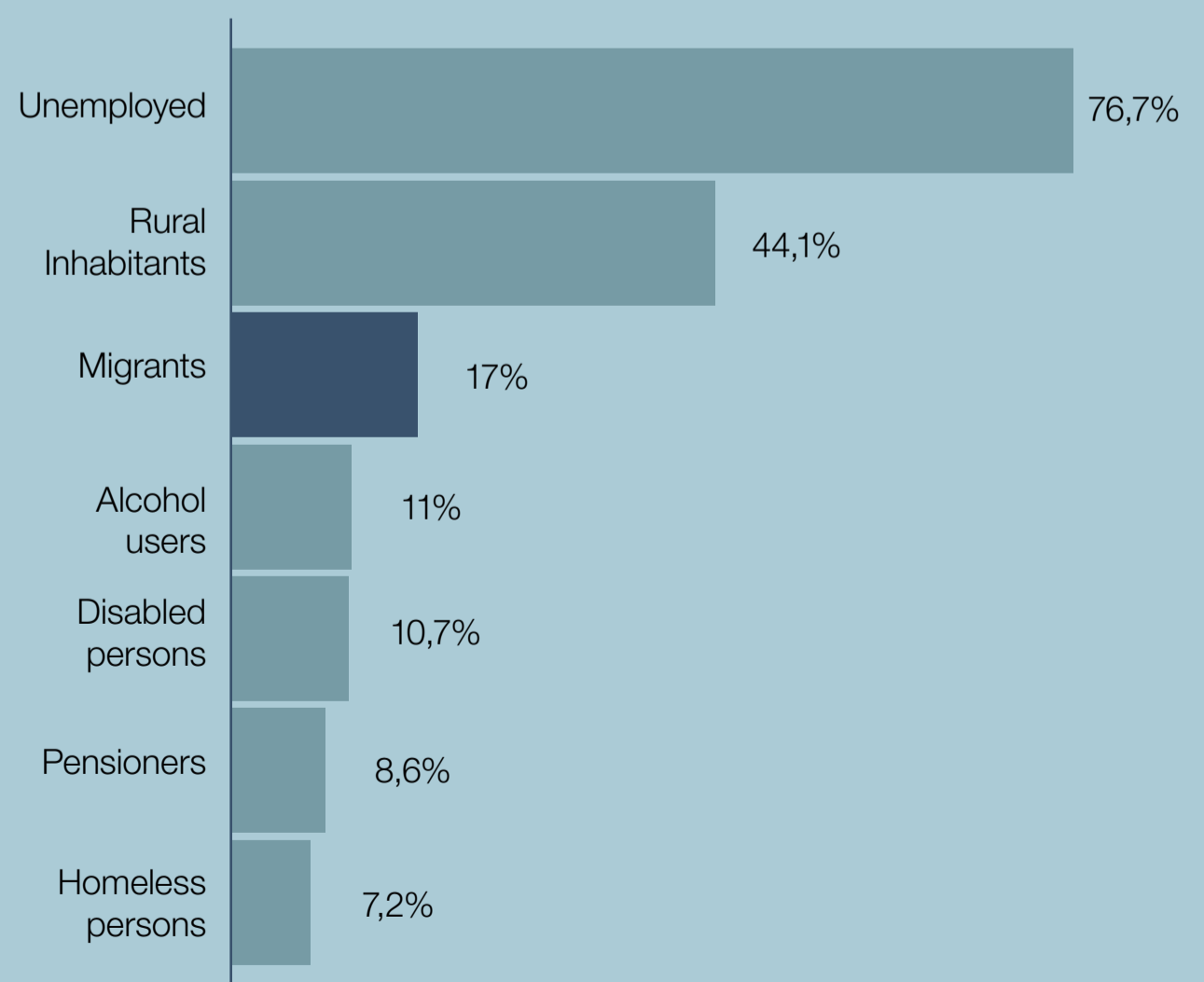


### Brain-waste



### Migrants' wide exposure to TB

The share of TB global incidence in 2010:



Migrants represent the third important group of persons in relation to TB global incidence, after the unemployed and rural inhabitants.